

A potential role for gap junctions in breast cancer metastasis to bone

H.J. Donahue¹, M.M. Saunders¹, Z. Li¹, A.M. Mastro², C.V. Gay², D.R. Welch³

¹Musculoskeletal Research Laboratory, Department of Orthopaedics and Rehabilitation, The Pennsylvania State University College of Medicine, Hershey, PA,

²Department of Biochemistry and Molecular Biology, The Pennsylvania State University, University Park, PA,

³Department of Pathology, University of Alabama at Birmingham, Birmingham, AL, USA

Introduction

The most lethal attribute of a cancer cell is its ability to metastasize. In a post-mortem evaluation of 358 cancer patients, Walther¹ found that after lung and liver, bone is the third most prevalent site of metastases. In breast carcinomas bone is one of the most common sites of distant metastases². In patients with bone metastasis, complications may be manifested in osteolysis, spinal cord compression, hypercalcemia, increased fracture incidence and unrelenting pain³. Furthermore, patients with bone metastasis are seldom cured. Clearly, the prevention of metastasis should, at the very least, improve the quality of life for the patient and may increase survival rates. Unfortunately, an incomplete understanding of breast cancer metastasis to bone has hindered development of effective treatments specifically targeting metastasis². In this review we discuss a working hypothesis we are developing that suggests connexin expression profiles and heterotypic gap junctional communication between breast cancer cells contributes to the mechanism by which breast cancer cells metastasize to bone.

Breast cancer metastasis

Breast cancer metastasis is a complex process that depends upon both the tumor cell properties and the targeted environment^{2,4}. This concept, attributed to Paget, is one of tumor metastatic propensity dependent upon the 'seed and the soil'⁵. For metastasis to occur, the tumor cells must be able to detach themselves from the primary tumor site in the breast, move through and invade the surrounding stroma

and endothelial lining to enter, intravasate, the blood vessels. Once in the circulatory system, the tumor cells are free to migrate until they arrest and adhere to the endothelial lining where the cells exit the vessel, extravasate, via transendothelial migration, and move to the secondary tumor site. At this secondary site the tumor cells invade the target and proliferate to form secondary tumors^{2,4}. In bone, to reach the extracellular matrix invading neoplastic cells must also cross a layer of bone lining osteoblastic cells which, it is generally believed, cover all bone surfaces⁶. We believe that it is possible that transosteoblastic migration involves mechanisms operative in transendothelial migration.

Although several researchers have stressed the importance of the circulatory system in the metastatic process, more recent research indicates that blood flow is not the sole determinant of metastasis⁷⁻⁹. To this end, it becomes important to understand that additional factors must be critical in determining metastatic potential for a particular tissue. Indeed, it is likely that complicated homotypic (tumor cell to tumor cell) and heterotypic (tumor cell to target cell) cellular interactions contribute to intravasation and extravasation. Two such intercellular interactions that may contribute to metastatic potential are cell-cell adhesion and cell-to-cell communication via gap junctions¹⁰.

Gap junctions and metastasis

Several studies have reported a loss of gap junction expression and function as important steps in invasion and metastasis¹¹⁻¹⁴. Gap junctions are membrane spanning channels that allow passage of small molecules (<1kD) such as calcium ions (Ca²⁺), inositol phosphates and cyclic nucleotides, from one cell to another. Each gap junction is comprised of two hexameres termed connexons that in turn are comprised of 6 subunits termed connexins (Cx). At least 15 different connexins have been identified in mammalian species. In bone tissue Cx43 is the predominant connexin but Cx45 and Cx46 are also expressed¹⁵⁻¹⁸. In breast tissue Cx43 is also the predominant connexin expressed^{12,19} but Cx26 and

Corresponding author: Henry J. Donahue, Ph.D., Musculoskeletal Research Laboratory, Department of Orthopaedics and Rehabilitation, Pennsylvania State University College of Medicine, Hershey, PA 17033, USA
E-mail: hdonahue@psu.edu

Accepted 27 February 2003

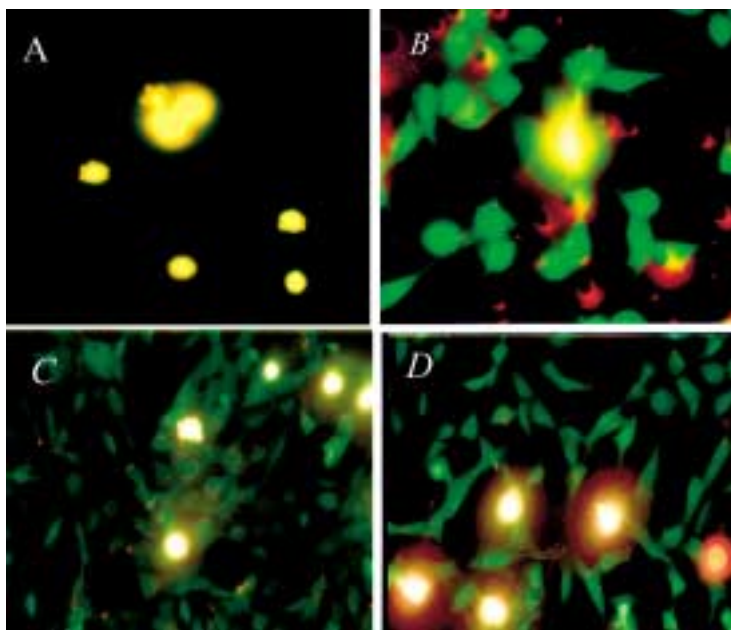


Figure 1. Homotypic (panels A and B) and heterotypic (panels C and D) GJIC in breast cancer cells and osteoblastic cells. To assess homotypic GJIC calcein loaded MDA-435 donor cells were placed in contact with monolayer MDA-435 acceptor cells (A) and calcein loaded 435-BrMS1 donor cells were placed into contact with monolayer 435-BrMS1 acceptor cells (B). MDA-435 did not display homotypic GJIC whereas 435-BrMS1 did. To assess heterotypic GJIC between breast cancer cell lines and osteoblastic hFOB 1.19 cells calcein loaded MDA-435 (C) or 435-BrMS1 (D) donor cells were placed in contact with monolayers of hFOB 1.19 acceptor cells. Both MDA-435 and 435-BrMS1 displayed abundant GJIC with hFOB 1.19 cells. MDA-435 appeared to be more highly coupled to hFOB 1.19 than were 435-BrMS1. These results are typical of 300-400 individual donor cells. From Saunders et al. *Cancer Research* 61:1765, 2001 (used by permission).

Cx32 are also expressed under certain circumstances such as pregnancy (Cx26) and lactation (Cx32)¹⁹⁻²³.

Over thirty years ago, Loewenstein and Kanno first proposed a link between the transformed phenotype and defects in gap junctional intercellular communication (GJIC)²⁴. Since then many studies have linked GJIC and tumorigenesis. For instance, GJIC is diminished or absent in many neoplastic cell lines and primary tumors and reparation of tumor cell GJIC slows tumor growth²⁵. Additionally, loss of GJIC correlates with malignant phenotype progression in neoplastic mammary tissue and these changes in GJIC may be related to changes in cell-cell adhesion²⁶, suggesting a role for cell adhesion molecules in the altered GJIC associated with tumorigenesis. It should be noted that at least one study reported a correlation between increased GJIC and increased tumorigenesis²⁷ and one study reported increased Cx43 expression in some breast tumor tissue²¹.

Cell-cell adhesion is often decreased in neoplastic cells²⁸ and many molecules including integrins, selectins, CD44, cadherins and laminins have been associated with altered cell-cell adhesion in neoplastic cells. Of these perhaps the molecules most clearly associated with altered cell-cell adhesion in neoplastic cells are the cadherins, specifically E-cadherin. Evidence for a role for E-cadherins in cancer development comes from many *in vitro* and *in vivo* studies demonstrating that loss of E-cadherin expression and function is closely related to induction of invasiveness and metastatic potential²⁸.

Additionally down regulation of E-cadherin expression has been found in a number of carcinomas²⁸⁻³⁰. E-cadherin is not only implicated in invasion and metastasis but in earlier steps in tumor development. Indeed, with the discovery of mutations in the E-cadherin gene family in breast and gastric carcinomas it has been classified as a tumor suppressor^{28,31}.

Several studies have linked E-cadherins with gap junction function and expression. For instance, Kanno et al.³² demonstrated that E-cadherin antibody blocks GJIC in teratocarcinoma cells. Additionally, extracellular Ca^{2+} induced increases in GJIC in mouse epidermal cells are accompanied by increased E-cadherin expression. In mouse epidermal carcinoma cells with low GJIC and E-cadherin expression, transfection with E-cadherin cDNA resulted in increased E-cadherin expression and increased GJIC³³. Furthermore, over expressing E-cadherin increases GJIC in rat epithelial and fibroblastic cells³⁴. Additionally, in populations of rat tracheal carcinoma cells, those populations with low GJIC lack expression of E-cadherin whereas those populations with high levels of GJIC expressed E-cadherin³⁵. Taken together these studies suggest that E-cadherin expression and function contribute to GJIC.

Since a loss of E-cadherin function is strongly correlated with invasiveness and metastatic potential, and since E-cadherin expression contributes to GJIC, we are investigating the possibility that GJIC is involved in invasiveness and metastatic potential. Indeed, recent evidence suggests that GJIC may contribute to

metastasis. For instance, GJIC has been demonstrated between metastatic tumor cells and vascular endothelium¹³ and is directly related to metastatic potential¹⁴. Thus, heterotypic GJIC between tumor cells and endothelial cells may contribute to the metastatic potential of malignant cells. To examine whether GJIC between cancer cells and osteoblastic bone lining cells may also contribute to metastasis, we have examined GJIC and connexin expression in breast cancer cells alone and in co-culture with osteoblastic cells. As cell models we used MDA-MB-435 (MDA-435), a highly metastatic, human breast carcinoma cell line; 435-BrMS1, MDA-435 cells expressing the recently discovered metastasis-suppressor gene, BrMS1³⁶; vector controls for the BrMS1 transfected cells; HS578Bst a non tumorigenic non-metastatic breast epithelial cell line and osteoblastic hFOB 1.19 cells.

Utilizing Lucifer yellow dye injection and dual label calcein dye transfer, we detected very little homotypic communication between metastatic 435 cells and themselves (Figure 1)³⁷. This is consistent with the decreased GJIC typical of tumorigenic cell lines³⁸⁻⁴⁰. However, 435-BrMS1 cells did communicate with one another via gap junctions. Thus, expressing the metastasis suppressing gene BrMS1 re-establishes homotypic GJIC in MDA-435 cells, suggesting a role for GJIC in breast cancer metastasis. Importantly, we found that expressing BrMS1 also restores homotypic GJIC in another breast cancer cell line, MDA-MB-231⁴¹ and in two human melanoma cell lines, MelJuSo and C8161.^{9,42} This suggests that the relationship between BrMS1 and GJIC is not unique to MDA-435 and indeed not even unique to breast cancer cell lines.

We next examined heterotypic GJIC between MDA-435 and hFOB 1.19 cells as well as between 435-BrMS1 and hFOB 1.19 cells. Dual label dye transfer studies revealed that, whereas MDA-435 cells were unable to communicate with themselves via GJIC, they expressed abundant GJIC with osteoblastic hFOB 1.19 cells (Figure 1). Metastasis suppressed 435-BrMS1 were also coupled to hFOB 1.19 cells but they appeared to be less well coupled to hFOB 1.19 cells than were MDA-435 cells. Thus, both highly metastatic MDA-435 cells and less metastatic 435-BrMS1 cells communicate with osteoblastic cells via gap junctions.

We have also examined connexin expression in a normal breast epithelial cell line and breast cancer cell lines³⁷. None of the cells examined expressed Cx26, 45 or 46. Cx43 mRNA and protein were detected in normal breast epithelial cells and 435-BrMS1 cells but not in MDA-435 or vector controls. On the other hand, highly metastatic MDA-435 and vector controls expressed abundant Cx32 mRNA whereas normal human epithelial cells and metastasis suppressed 435-BrMS1 did not (Figure 2). Western blot analysis revealed similar results for Cx32 protein expression. Thus, expressing the metastasis suppressing gene BrMS1 in MDA-435 cells at least partially restores Cx43 mRNA expression while inhibiting expression of Cx32, a gap junction protein expressed in highly metastatic breast cancer cells but not normal breast epithelial cells. It is not clear why we do not detect homotypic GJIC between Cx32 containing MDA-435 cells and themselves. There are several possibilities. One possibility is

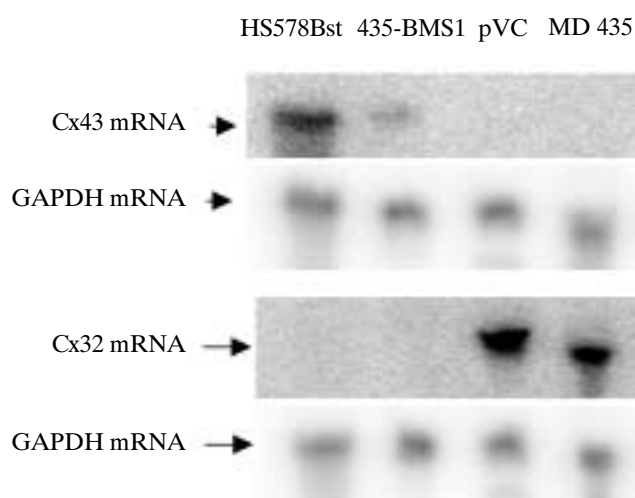


Figure 2. Cx43, Cx32 and GAPDH mRNA expression in human breast epithelial cells and breast cancer cell lines. Cells were cultured to confluence and steady-state Cx43, Cx32 and GAPDH mRNA levels assessed by Northern blot analysis. Neither metastatic MDA-435 or vector control (pVC) cells expressed Cx43. Human breast epithelial cells (HS578Bst) expressed Cx43 and Cx43 was moderately expressed in the metastasis-suppressed 435-BrMS1 cells. Neither human breast epithelial cells (HS578Bst) nor metastasis suppressed 435-BrMS1 cells expressed Cx32. Both MDA-435 and vector controls (435pVC) expressed Cx32. This result is typical of three similar experiments. From Saunders et al. *Cancer Research* 61:1765, 2001 (used by permission).

that GJIC through Cx32 containing gap junctions is such that it cannot be detected by Lucifer yellow or calcein dye transfer. In this case patch clamp studies might reveal Cx32 mediated GJIC. Another possibility is that MDA-435 cells do not express appropriate cell-cell adhesion molecules to allow for GJIC. For instance MDA-435 cells do not express E-cadherin (unpublished data), a cell adhesion molecule that contributes to GJIC. Finally, it is possible that Cx32 is expressed but not transported to the membrane, as has been shown to be the case for liver tumor cells⁴³. We are currently investigating these possibilities.

Since we demonstrated that hFOB 1.19 express Cx43 but not Cx32¹⁶ and MDA-435 express Cx32 but not Cx43³⁷, it is possible that GJIC between MDA-435 cells and hFOB 1.19 is the result of heterotypic channels composed of both Cx32 and Cx43. A heterotypic Cx32/Cx43 channel could facilitate GJIC that is characteristically different, in terms of signals transferred, degree of coupling, permeability etc., than homotypic Cx43/Cx43 channels formed between 435-BrMS1 and hFOB 1.19 cells. Our working hypothesis predicts that such differences in channel characteristics contribute to the increased metastatic potential of MDA-435 relative to 435-BrMS1 cells. However, it is important to note that we have yet to determine whether heterologous coupling is indeed due to heterologous gap junction formation.

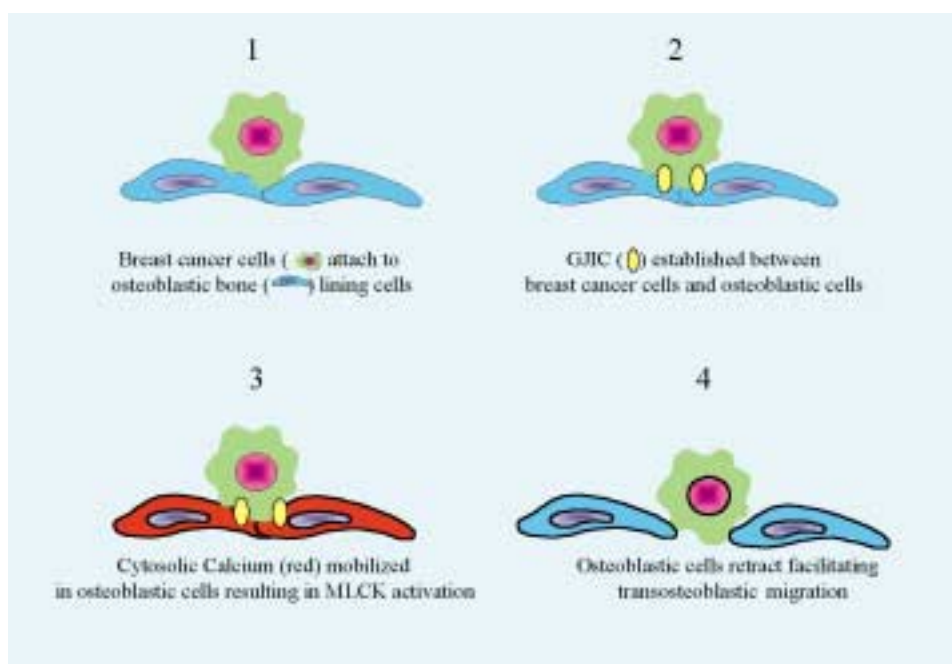


Figure 3. Working hypothesis on the role of gap junctions in breast cancer cell metastasis to bone. See text for details.

Paracellular migration and cytosolic calcium

One potential mechanism by which increased heterotypic GJIC between tumor cells and target organ cells could contribute to metastasis is by facilitating tumor cell paracellular migration. A widely held hypothesis is that upon tumor cell adhesion to, for instance, endothelium, a retraction of the endothelial cell layer occurs⁴⁴⁻⁴⁶. However the mechanism by which this occurs is unknown. Studies by Lewalle et al.⁴⁷ suggest a role for cytosolic Ca^{2+} . These investigators demonstrated that breast cancer cell contact with endothelial cells resulted in transient increases in cytosolic Ca^{2+} concentration ($[Ca^{2+}]_i$) in individual endothelial cells. Neither isolated cancer cell membranes, tumor cell conditioned media, inert beads nor breast epithelial cells induced Ca^{2+} transients in endothelial cells. Thus, the effect on $[Ca^{2+}]_i$ was specific for intact breast cancer cells and not a result of membrane bound molecules, secreted cytokines or mechanical perturbations. Importantly, these investigators demonstrated that this increase in Ca^{2+} was necessary for paracellular migration of tumor cells. Interestingly, transendothelial migration of leukocytes and monocytes is also related to cell contact initiated increases in endothelial cell $[Ca^{2+}]_i$ ⁴⁸⁻⁵⁰ and endothelial cell $[Ca^{2+}]_i$ increases upon contact with metastatic melanoma cells⁵¹. Thus, accumulating data suggest that cell-cell contact between tumor cells and endothelial cells results in increased endothelial cell $[Ca^{2+}]_i$ that contributes to endothelial cell retraction and paracellular migration.

It is unclear how tumor cell-endothelial cell interactions could lead to an increase in endothelial cell $[Ca^{2+}]_i$.

However, one possibility is that cell-cell contact elevates $[Ca^{2+}]_i$ in endothelial cells via GJIC. Indeed, several studies suggest that heterotypic GJIC facilitates propagation of intercellular Ca^{2+} signals^{52,53}. For instance, we have demonstrated that membrane-deformation induced Ca^{2+} signals propagate from osteocytic cells to osteoblastic cells in a manner which is blocked by the gap junction uncoupler glycyrrhetic acid suggesting a role for GJIC⁵⁴. We are currently investigating the possibility that breast cancer cell contact induces increases in $[Ca^{2+}]_i$ in osteoblastic cells via a similar GJIC dependent mechanism. Interestingly, modulators of cytosolic Ca^{2+} dynamics have been shown to modulate metastatic potential⁵⁵ consistent with our proposal.

Myosin light chain kinase and paracellular migration

One way in which cell-cell interactions, especially GJIC, could facilitate paracellular migration via an increase in $[Ca^{2+}]_i$ is through activation of factors which would facilitate cell retraction of endothelial or osteoblastic bone lining cells. One such candidate is myosin light chain kinase (MLCK). MLCK is especially attractive in this regard since $[Ca^{2+}]_i$ tightly regulates the activity of this enzyme⁵⁶⁻⁵⁸. Increases in $[Ca^{2+}]_i$ activate calmodulin which in turn activates MLCK. MLCK then phosphorylates myosin light chains which facilitates actin sliding and cellular contraction. Thus, MLCK directly modulates endothelial cell retraction and could potentially modulate osteoblastic bone lining cell contraction. We propose that cell-cell contact and GJIC between breast cancer cells and

osteoblastic cells results in a Ca^{2+} signal being transferred via GJIC from breast cancer cells to osteoblastic cells which activates MLCK in osteoblastic cells resulting in osteoblastic cell retraction and facilitation of transosteoblastic migration. As a first step in addressing this issue, we have recently demonstrated that hFOB 1.19 cells express abundant MLCK activity, which is activated by cytosolic Ca^{2+} mobilization.

A role of MLCK in paracellular migration is supported by studies of diapedesis, the mechanism of which may be similar to tumor cell paracellular migration. Garcia et al.⁵⁹ demonstrated that adherent neutrophils activate endothelial MLCK activity and transendothelial migration of neutrophils. This phenomenon was attenuated by inhibitors for MLCK (KT 5926 or ML-7) and potentiated by the myosin associated phosphatase inhibitor calcyculin.

Summary

Accumulating data suggest that altered connexin expression and gap junctional communication contributes not only to tumorigenesis but also to metastasis. Recent data from our laboratory and that of others has led us to develop a working hypothesis that would explain the role of altered gap junctional communication in breast cancer metastasis to bone. A schematic of our working hypothesis is illustrated in Figure 3. In this model breast cancer cells bind to osteoblastic bone lining cells through cell-cell adhesion molecules (1). Heterotypic gap junctional intercellular communication is established between the breast cancer cells and osteoblastic cells (2). This results in the mobilization of intracellular cytosolic calcium in the osteoblastic cells (3) activating myosin light chain kinase and retraction of the osteoblastic cells away from one another (4). This opens up a pathway that facilitates breast cancer cell migration through the layer of bone lining cells providing access to the bone extracellular matrix. It should be noted that a similar mechanism might explain breast cancer cell transendothelial migration. Future studies will address the four steps in this model and may lead to the development of novel therapeutics targeting connexins and gap junctional communication in breast cancer metastasis.

Acknowledgments

Research described in this manuscript was supported by R01 CA88728 and R01 CA90991 from the National Institutes of Health; DAMD17-02-1-0541 and DAMD17-00-1-0646 from the United States Army Medical Research and Materiel Command; and a Pennsylvania State Tobacco Settlement Formula Fund (FTT) Award.

References

1. Walther HE. Krebsmetastasen. Bens schwabe verlag. Basel, Switzerland; 1948.
2. Woodhouse EC, Chuaqui RF, Liotta LA. General mechanisms of metastasis. *Cancer* 1997; 80(Suppl.8):1529-1537.
3. Mundy GR. Mechanisms of bone metastasis. *Cancer* 1997; 80(Suppl.8):1546-1556.
4. Goltzman D. Mechanisms of the development of osteoblastic

- metastases. *Cancer* 1997; 80(Suppl.8):1581-1587.
5. Paget J. The distribution of secondary growths in cancer of the breast. *Lancet* 1889; i:571-573.
6. Chole RA, Tinling SP. Bone lining cells of the mammalian cochlea. *Hear Res* 1994; 75:233-243.
7. Dodds PR, Caride VJ, Lytton B. The role of vertebral veins in the dissemination of prostatic carcinoma. *J Urol* 1981; 126:753-755.
8. Galasko CS. Skeletal metastases. *Clin Orthop Rel Res* 1986; 210:18-30.
9. Galasko C. Skeletal metastases. Butterworth, London; 1986:1-160.
10. Trosko J, Ruch R. Cell-cell communication in carcinogenesis. *Front Biosci* 1998; 3:D208-236.
11. Brauner T, Hulser DF. Tumor cell invasion and gap junctional communication. II. Normal and malignant cells confronted in multicell spheroids. *Invasion Metastasis* 1990; 10:31-48.
12. Laird DW, Fistouris P, Batist G, Alpert L, Huynh HT, Carystinos GD, Alaoui-Jamali MA. Deficiency of connexin43 gap junctions is an independent marker for breast tumors. *Cancer Res* 1999; 59:4104-4110.
13. El-Sabban ME, Pauli BU. Adhesion-mediated gap junctional communication between lung-metastatic cancer cells and endothelium. *Invasion Metastasis* 1994; 14:164-176.
14. Brauner T, Schmid A, Hulser DF. Tumor cell invasion and gap junctional communication. I. Normal and malignant cells confronted in monolayer cultures. *Invasion Metastasis* 1990; 10:18-30.
15. Donahue HJ, McLeod KJ, Rubin CT, Andersen J, Grine EA, Hertzberg EL, Brink PR. Cell-to-cell communication in osteoblastic networks: cell line-dependent hormonal regulation of gap junction function. *J Bone Miner Res* 1995; 10:881-889.
16. Donahue HJ, Li Z, Zhou Z, Yellowley CE. Differentiation of human fetal osteoblastic cells is partially dependent on gap junctional intercellular communication. *Am J Physiol Cell Physiol* 2000; 278:C315-C322.
17. Civitelli R, Beyer EC, Warlow PM, Robertson AJ, Geist ST, Steinberg TH. Connexin43 mediates direct intercellular communication in human osteoblastic cell networks. *J Clin Invest* 1993; 91:1888-1896.
18. Koval M, Harley JE, Hick E, Steinberg TH. Connexin46 is retained as monomers in a trans-Golgi compartment of osteoblastic cells. *J Cell Biol* 1997; 137:847-857.
19. Monaghan P, Clarke C, Perusinghe NP, Moss DW, Chen XY, Evans WH. Gap junction distribution and connexin expression in human breast. *Exp Cell Res* 1996; 223:29-38.
20. Locke D, Perusinghe N, Newman T, Jayatilake H, Evans WH, Monaghan P. Developmental expression and assembly of connexins into homomeric and heteromeric gap junction hemichannels in the mouse mammary gland. *J Cell Physiol* 2000; 183:228-237.
21. Jamieson S, Going JJ, Arcy RD, George WD. Expression of gap junction proteins connexin 26 and connexin 43 in normal human breast and in breast tumors. *J Pathol* 1998; 184:37-43.
22. Pozzi A, Risek B, Kiang DT, Gilula NB, Kumar NM. Analysis of multiple gap junction gene products in the rodent and human mammary gland. *Exp Cell Res* 1995; 220:212-219.
23. Wilgenbus KK, Kirkpatrick CJ, Knuechel R, Willecke K, Traub O. Expression of Cx26, Cx32 and Cx43 gap junction proteins in normal and neoplastic human tissues. *Int J Cancer* 1992; 51:522-529.
24. Loewenstein WR, Kanno Y. Intercellular communication and the control of tissue growth: lack of communication between cancer cells. *Nature* 1966; 209:1248-1249.

25. Eghbali B, Kessler JA, Reid LM, Roy C, Spray DC. Involvement of gap junctions in tumorigenesis: transfection of tumor cells with connexin 32 cDNA retards growth *in vivo*. Proc Natl Acad Sci USA 1991; 88:10701-10705.
26. Locke D. Gap junctions in normal and neoplastic mammary gland. J Pathol 1998; 186:343-349.
27. Asamoto M, Takahashi S, Imaida K, Shirai T, Fukushima S. Increased gap junctional intercellular communication capacity and connexin 43 and 26 expression in rat bladder carcinogenesis. Carcinogenesis 1994; 15:2163-2166.
28. Behrens J. Cadherins and catenins: role in signal transduction and tumor progression. Cancer Metastasis Rev 1999; 18:15-30.
29. Birchmeier W, Behrens J. Cadherin expression in carcinomas: role in the formation of cell junctions and the prevention of invasiveness. Biochim Biophys Acta 1994; 1198:11-26.
30. Bracke ME, Van Roy FM, Mareel MM. The E-cadherin/catenin complex in invasion and metastasis. Curr Top Microbiol Immunol 1996; 213(Pt 1):123-161.
31. Berx G, Becker KF, Hofler H, van Roy F. Mutations of the human E-cadherin (CDH1) gene. Hum Mutat 1998; 12:226-237.
32. Kanno Y, Sasaki Y, Shiba Y, Yoshida-Noro C, Takeichi M. Monoclonal antibody ECCD-1 inhibits intercellular communication in teratocarcinoma PCC3 cells. Exp Cell Res 1984; 152:270-274.
33. Jongen WMF, Fitzgerald DJ, Asamoto M, Piccoli C, Slaga TJ, Gros D, Takeichi M, Yamasaki H. Regulation of connexin 43-mediated gap junctional intercellular communication by Ca²⁺ in mouse epidermal cells is controlled by E-cadherin. J Cell Biol 1991; 114:545-555.
34. Prowse DM, Cadwallader GP, Pitts JD. E-cadherin expression can alter the specificity of gap junction formation. Cell Biol Int 1997; 21:833-843.
35. Terzaghi-Howe M, Chang GW, Popp D. Emergence of undifferentiated rat tracheal cell carcinomas, but not squamous cell carcinomas, is associated with a loss of expression of E-cadherin and of gap junction communication. Carcinogenesis 1997; 18:2043-2050.
36. Seraj MJ, Samant RS, Verderame MF, Welch DR. Functional evidence for a novel human breast carcinoma metastasis suppressor, BRMS1, encoded at chromosome 11q13. Cancer Res 2000; 60:2764-2769.
37. Saunders MM, Seraj MJ, Li Z, Zhou Z, Winter CR, Welch DR, Donahue HJ. Breast cancer metastatic potential correlates with a breakdown in homospecific and heterospecific gap junctional intercellular communication. Cancer Res 2001; 61:1765-1767.
38. Umhauer S, Ruch RJ, Fanning J. Gap junctional intercellular communication and connexin 43 expression in ovarian carcinoma. Am J Obstet Gynecol 2000; 182:999-1000.
39. Rosenkranz HS, Pollack N, Cunningham AR. Exploring the relationship between the inhibition of gap junctional intercellular communication and other biological phenomena. Carcinogenesis 2000; 21:1007-1011.
40. Yamasaki H, Krutovskikh V, Mesnil M, Tanaka T, Zaidan-Dagli ML, Omori Y. Role of connexin (gap junction) genes in cell growth control and carcinogenesis. CR Acad Sci III, 1999; 322:151-159.
41. Samant RS, Seraj MJ, Saunders MM, Sakamaki TS, Shevde LA, Harms JF, Leonard TO, Goldberg SF, Budgeon L, Meehan WJ, Winter CR, Christensen ND, Verderame MF, Donahue HJ, Welch DR. Analysis of mechanisms underlying BRMS1 suppression of metastasis. Clin Exp Metastasis 2000; 18:683-693.
42. Shevde LA, Samant RS, Goldberg SF, Sikaneta T, Alessandrini A, Donahue HJ, Mauger DT, Welch DR. Suppression of human melanoma metastasis by the metastasis suppressor gene, BRMS1. Exp Cell Res 2002; 273:229-239.
43. Krutovskikh V, Mazzoleni G, Mironov N, Omori Y, Aguelon AM, Mesnil M, Berger F, Partensky C, Yamasaki H. Altered homologous and heterologous gap-junctional intercellular communication in primary human liver tumors associated with aberrant protein localization but not gene mutation of connexin 32. Int J Cancer 1994; 56:87-94.
44. Sandig M, Voura EB, Kalnins VI, Siu CH. Role of cadherins in the transendothelial migration of melanoma cells in culture. Cell Motil Cytoskeleton 1997; 38:351-364.
45. El-Sabban ME, Pauli BU. Cytoplasmic dye transfer between metastatic tumor cells and vascular endothelium. J Cell Biol 1991; 115:1375-1381.
46. Nicolson GL. Cancer metastasis: tumor cell and host organ properties important in metastasis to specific secondary sites. Biochim Biophys Acta 1988; 948:175-224.
47. Lewalle JM, Cataldo D, Bajou K, Lambert CA, Foidart JM. Endothelial cell intracellular Ca²⁺ concentration is increased upon breast tumor cell contact and mediates tumor cell transendothelial migration. Clin Exp Metastasis 1998; 16:21-29.
48. Huang AJ, Manning JE, Bandak TM, Ratau MC, Hanser KR, Silverstein SC. Endothelial cell cytosolic free calcium regulates neutrophil migration across monolayers of endothelial cells. J Cell Biol 1993; 120:1371-1380.
49. Ziegelstein RC, Corda S, Pili R, Passaniti A, Lefer D, Zweier JL, Fraticelli A, Capogrossi MC. Initial contact and subsequent adhesion of human neutrophils or monocytes to human aortic endothelial cells releases an endothelial intracellular calcium store. Circulation 1994; 90:1899-1907.
50. Pfau S, Leitenberg D, Rinder H, Smith BR, Pardi R, Bender JR. Lymphocyte adhesion-dependent calcium signaling in human endothelial cells. J Cell Biol 1995; 128:969-978.
51. Pili R, Corda S, Passaniti A, Ziegelstein RC, Heldman AW, Capogrossi M. Endothelial cell Ca²⁺ increases upon tumor cell contact and modulates cell-cell adhesion. J Clin Invest 1993; 92:3017-3022.
52. Boitano S, Dirksen ER, Sanderson MJ. Intercellular propagation of calcium waves mediated by inositol trisphosphate. Science 1992; 258:292-295.
53. Sanderson MJ, Charles AC, Dirksen ER. Mechanical stimulation and intercellular communication increases intracellular Ca²⁺ in epithelial cells. Cell Regul 1990; 1:585-596.
54. Yellowley CE, Li Z, Zhou Z, Jacobs CR, Donahue HJ. Functional gap junctions between osteocytic and osteoblastic cells. J Bone Miner Res 2000; 15:209-217.
55. Yohem KH, Clothier JL, Montague SL, Geary RJ, Winters ALD, Hendrix MJ, Welch DR. Inhibition of tumor cell invasion by verapamil. Pigment Cell Res 1991; 4:225-233.
56. Lin P, Luby-Phelps K, Stull JT. Properties of filament-bound myosin light chain kinase. J Biol Chem 1999; 274:5987-5994.
57. Stull JT, Lin PJ, Krueger JK, Trewella J, Zhi G. Myosin light chain kinase: functional domains and structural motifs. Acta Physiol Scand 1998; 164:471-482.
58. Kohama K, Ye LH, Hayakawa K, Okagaki T. Myosin light chain kinase: an actin-binding protein that regulates an ATP-dependent interaction with myosin. Trends Pharmacol Sci 1996; 17:284-287.
59. Garcia JG, Verin AD, Herenyiova M, English D. Adherent neutrophils activate endothelial myosin light chain kinase: role in transendothelial migration. J Appl Physiol 1998; 84:1817-1821.